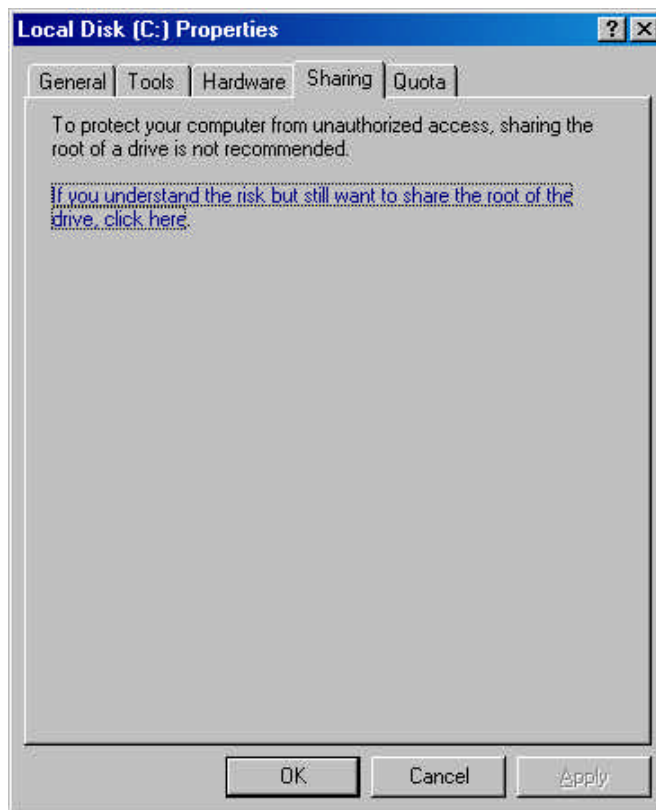


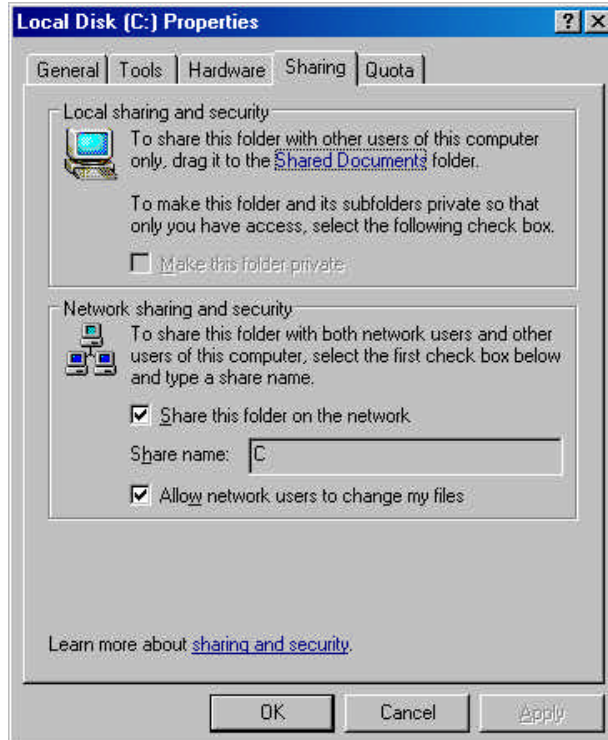
Setting up Programs on a Windows XP Professional Machine (Power User)

- 1- Check the settings in Windows Explorer (*Right click on start and click Explore*). Must be logged in as an Administrator status. This sample uses the C drive (use this same scenario - where the data files are located, adjust to your network drive as needed).
- 2- Right click on C drive (or folder under - like Program Files - if you don't want to share the whole drive)
- 3- Click on **Sharing and Security**, then click on the **Sharing** Tab



Click on – ***If you understand the risk but still want to share the root of the drive, click here.*** This takes you to the sharing screen.

Check - ***Share this folder on the Network***, it will create a share name of C; or give it one of your own.



- (Screens might be different - Variation: Share this folder can use \$C.)
- 4- Click **Apply**, it will show the sharing of files, then click **OK** to close out.
 - 5- **Log off** as Administrator.
 - 6- **Log on** as Power User.
 - 7- **Note:** BDE settings must be set correctly, depending on how you shared your files as Administrator status (above).
 - 8- Go to **Start|Program Files|Folio Box Office Management|BDE Administrator**
 - a) Under **Configuration** tab click on **Configuration+|Drivers+|Native+**. Then click on the word **Paradox**.
 - b) Under Definition (on the right side of the screen) the **Net Dir** needs to be set to your share i.e. C:/ or C:/Program Files (however you shared above).
 - c) To change this setting in the Net Dir, click next to the Net Dir and then the **ellipsis** (3 dots to the right). Browse to your share i.e. C:/ or C:/Program Files
 - d) Click **OK**. Close out of BDE Administrator and save your changes.
 - 9- Open your MarTech program.
 - 10- Make sure your temporary folder is set under **Utilities|Preferences** in your program (*note: if sharing down to the level of Program Files instead of the C drive you must change this setting to C:\Program Files\; if shared at drive level it should be C:/*).